



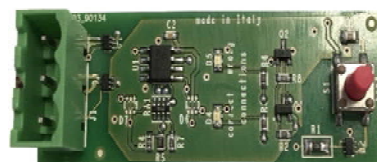
CHECKER-24 GAS SENSOR controller



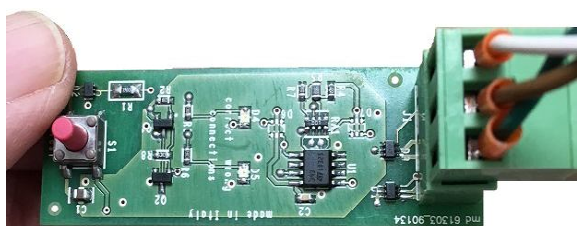
Are you sure to have correctly performed the GAS sensors connection?
Today with CHECKER-24 you can do it !!

Are you sure the GAS sensors detection are working well?
Today with CHECKER-24 you can perform the check !!

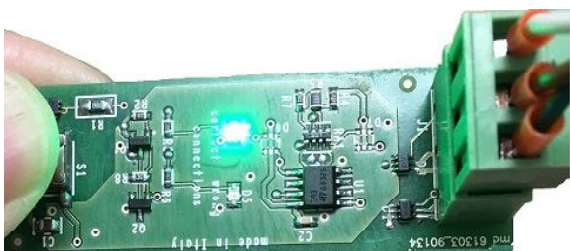
CHECKER-24




You can **get it for free**
with the purchase of 20 sensors !!



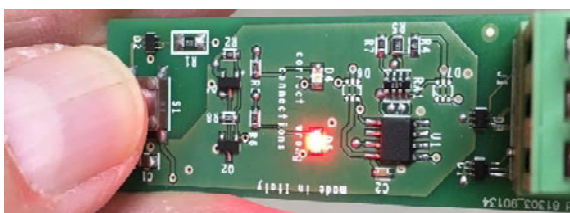
1) Insert the terminal connected to the probe cable from the control unit. Insert it in the right position



2) Press and hold the button after inserting.  If the **Green LED** lights up, the cable connection is **EXACT**.

At the same time the control unit will exit the state of Fault and signal the status of **ALARM**.

OPERATING: **REGULAR**




3) Press and hold the button after inserting. If the **Red LED** lights up, the cable connections are **WRONG**. Check the connection and try again

The control unit does not report any status of **ALARM**, but indicates the status of **FAULT**.

OPERATION: **NOT REGULAR**.

BEINAT S.r.l.
Via Fatebenefratelli 122/C 10077, S. Maurizio C/se (TO) - ITALY
Tel. 011.921.04.84 - Fax 011.921.14.77
[http:// www.beinat.com](http://www.beinat.com)

 **Commerciale** - info@beinat.com
Assistenza tecnica - laboratorio@beinat.com



Made in Italy